

NOVEMBER 2025

The Benefice Magazine
for the Parishes of
St Peter & St Paul,
St Peter and St Luke



*St Peter and St Paul's,
Wem*



*St Peter's,
Lee Brockhurst*



*St Luke's,
Weston-under-Redcastle*

**THE BENEFICE OF
ST PETER & ST PAUL, WEM
ST PETER, LEE BROCKHURST
ST LUKE, WESTON-UNDER-REDCASTLE**

Rector

The Reverend John Christopher Jukes BTh (Hons) MA
The Rectory Ellesmere Road, Wem SY4 5TU
01939 235343
revjohnjukes@gmail.com

Retired Clergy

Canon Dr William Price
The Reverend Edith Quirey
Reverend Mike Cotterell
Prebendary Rob Haarhoff

Further details are available on our website:

www.wemcofe.co.uk

and on

[Facebook@Wemparishchurch](https://www.facebook.com/Wemparishchurch)

ST PETER AND ST PAUL'S CHURCH, WEM

Churchwardens

Sybil Farmer 01939 232568 and David Murray 01939 236134

Parish Reader

Katharine Murray

PCC Lay Chair

Sybil Farmer 01939 232568

PCC Treasurer

Caroline Sinclair 01939 232626

Organist

Glyn Williams 01939 234954

Sacristan

June Powell 01939 234412

Church Flowers

Sybil Farmer 01939 232568

Church Hall Bookings – Via website/Facebook

ST PETER'S, LEE BROCKHURST

Churchwardens

Val Lusby 01939 235610

Roger Ashton 01939 232425

Treasurer

Roger Ashton 01939 232425

PCC Secretary

Phoebe Ashton 07858 123669

PCC Lay Chairman

Tim Wilton-Morgan 07802 735769

Church Warden Emeritus

Robert Marsh 01939 200641

ST LUKE'S, WESTON-UNDER-REDCASTLE

Churchwardens

Frank Hosie-Kingham 01939 200618

Helen O'Neill 01939 200663

Treasurer

Colin Holloway 01939 200682

Church Warden Emeritus

Arthur Fox 01630 685180



LEE



WEM



WESTON

SERVICES IN THE BENEFICE IN NOVEMBER					
DAY	DATE	SEASON	WEM	WESTON	LEE
SUNDAY	2nd	ALL SAINTS DAY	08:00 HE 09:45 HE 16:00 ASS	09:30 MP	11:15 HE
THURSDAY	6th		09:30 HE		
SUNDAY	9th	REMEMBRANCE SUNDAY	08:00 HE 09:15 HE 10:55 RS	10:50 RS	SERVICE AT WEM
TUESDAY	11th	ARMISTICE DAY	11:00 ADS		
THURSDAY	13th		09:30 HE		
SUNDAY	16th	2nd SUNDAY before ADVENT	08:00 HE 09:45 HE	09:30 HE	11:15 HE
THURSDAY	20th		09:30 HE		
SUNDAY	23rd	CHRIST THE KING	08:00 HE 09:45 HE 17:00 P&P	11:00 HE	11:15 MP
THURSDAY	27th		09:30 HE		
SUNDAY	30th	ADVENT SUNDAY	BENEFICE SERVICE at LEE	BENEFICE SERVICE at LEE	11:15 BENEFICE SERVICE
HE—Holy Eucharist MP—Morning Prayer P&P—Praise & Prayer RS—Remembrance Day Service ASS—All Souls Service ADS—Armistice Day Service					





Notes from the Editor

NOVEMBER 2025

Dear Readers,
Editorial for NOVEMBER

When I saw the leaves falling off the beech trees in our garden in August and early September and covering the lawn I thought that autumn would not happen since all the trees would have shed their leaves in order to survive by reducing the amount of transpiration through the leaf surface. How wrong I was, today when the sun shone after a few rather dull days the autumn colours were abundant to see.

So what have we in store for you this month? Well we have the final financial result from the Weston Show. What a great sum and such a reward for all the hard work that went into making it so successful; lovely photos accompanying the information too. An article entitled Light and Truth from the Dean of Lichfield Cathedral, the first woman to hold this post, together with a very interesting photograph.

A report from Wem about the successful Ride and Stride activities of Rob Ballantyne and Helen Hornsby. A very educational article about amphibians and reptiles and how they overwinter and survive the winter weather. Countryside Matters considers the Welfare and Health not only of human beings but also of the animals for which they care.

There are also lots of events taking place in November and even some with a Christmas flavour!

Enjoy the read.

Phoebe

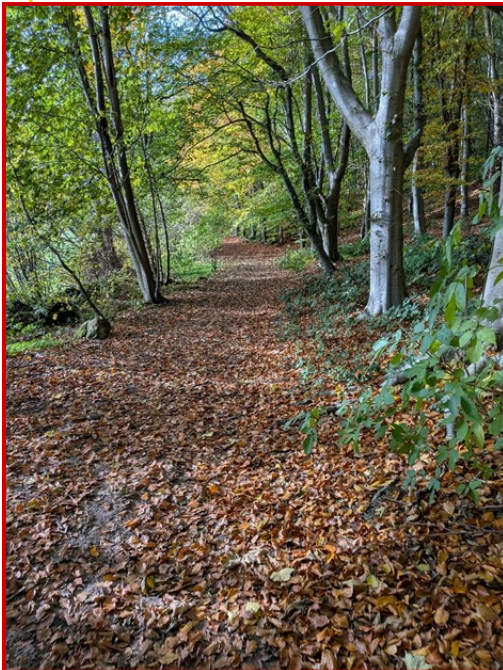
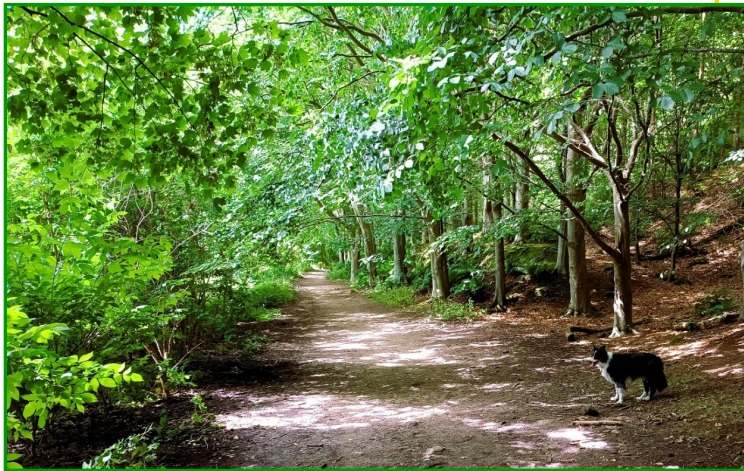
Rector's Ramblings

In August last year I centred my article for the magazine around our Border Collie "Bea". As I write this article, I am painfully aware that Bea is no longer with us. She lived a long, full life and I am grateful for all the time we had her with us.

The picture I included in the original article showed her on our walk at Grinshill. I reproduce it here.

Here the leaves are green in the dappled sunlight. A promise of things to come?

Today I took another picture, almost in the same spot.



As you can see the colours of autumn leaves are golden and brown. There are fallen leaves covering the ground, rather than the bare earth. But missing from this picture is, of course, Bea.

This time of year is a time of remembering. We will have an All Souls Day Service in Church to remember those whom we have lost. We observe Remembrance Sunday and Armistice Day. All 'remembering' services in one way or another.

My pictures show the changing of the seasons from summer to autumn taking place not only in the natural world, as the leaves turn gold and brown before dropping to the earth, but also in our personal lives as relationships change, and in our church life as well. The liturgical calendar moves us forward through the time of remembering to the end of the month when we celebrate Advent Sunday. Now we begin to look forward to the coming of the light of Christ into a dark world, a light which brings hope for this world, and the next.

In this season of Autumn, we have remembered those we have personally lost and those who gave their lives for others. It is right and proper to do these things, but it is also important to be present in the now and to look forward to the future.

I follow a feed in my social media called Mindful Christianity. This feed puts up inspirational words and quotes. At this time, I think the following two quotes speak loudly to me, and perhaps they will speak to you, too. *"Be the things you loved the most about the people who are gone"* and *"Every day may not be good, but there's something good in every day"*.

Jeremiah 29:11 says, "For I know the plans I have for you," declares the LORD, plans to prosper you and not to harm you, plans to give you hope and a future.

God's rich blessings to you all.

Yours in Christ,

Reverend John.



THE CHURCHES OF WEM AND WHITCHURCH RURAL DEANERY

This is the eighth instalment of my account of the churches
in this Rural Deanery in alphabetical order.



ST MARY MAGDALENE, **HADNALL**

Hadnall was a chapelry in the parish of Myddle until it became a separate parish on 22 October 1856. It might be that Hadnall Chapel received its dedication to St Mary Magdalene on that date.



The chapel was a small building of Grinshill stone with two Norman doorways, a porch, and a bell turret. The first structural change was the building of the tower in 1837 to replace the bell turret. Viscount Hill, Wellington's second-in-command at Waterloo and later Commander in Chief of the army, paid for the tower on the understanding, which was



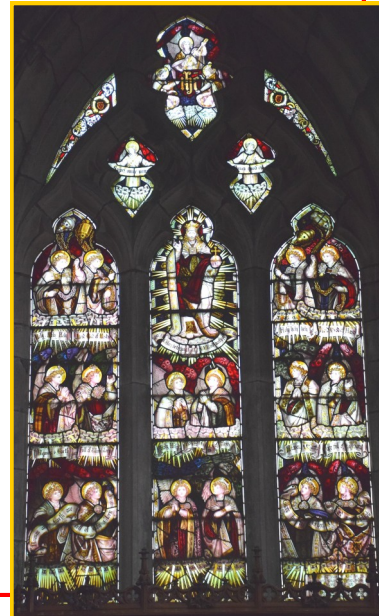
respected, that he would be buried under it. He lived at Hardwicke Grange in the parish and he died in 1842. He is commemorated in the church by a monument by Thomas Carline showing a soldier and a shepherd with a lion between them. In Shrewsbury he is remembered by the column in Abbey Foregate.



The chancel and vestry were added in 1874 to designs by Edward Haycock junior, a prolific Shrewsbury architect. The east window in the chapel was moved to the east end of the new chancel. In 1903 the church was again restored, this time by

Frank Bibby of Hardwicke Grange and Sansaw in memory of his parents. The architect was E Ridsdale Tate of York. This is essentially the church we see today with the hammer-beam roof and the clerestory in the nave, the chancel screen, the altar rails, the altar and reredos, the choir stalls, and the organ screen, together with the oak staircase in the tower, and, outside, the lychgate. Parapets were added to the nave and tower, and Frank Bibby gave a set of tubular bells. All the work is of the highest standard, as in the other 'Bibby church' at Clive. The interior has been described as a 'riot of richly carved woodwork'.

The east window of 1887 is by the famous firm of C E Kempe, as are two windows in the north wall of the nave and another in the south wall of the nave. One window in the chancel by Clayton and Bell shows the Light of the World, and another is a beautiful window showing Jesus and St Mary Magdalene, the patron saint of the



church. There are two one-light windows at the west end of the nave by Powell's. All the windows are of stained glass and they make the church interior rather dark. The embroidered hassocks add colour to the nave. The font came from Malta in 1880, the two-manual organ is by Jardine of Manchester, and the former mortuary by the north-west gate has been converted into a toilet.

Hadnall church, which John Leonard described as 'a pleasing mixture of medieval and Victorian styles', is usually unlocked. It is part of a four parish benefice covering Astley, Clive, Grinshill, and Hadnall.

My father was Vicar of Hadnall for 32 years and this was my church for many years when I was young. Here I was confirmed by Bishop Stretton Reeve on 28 October 1956, and the ashes of my parents and my sister are buried near the porch. This church is full of memories for me.

William Price



Notes from The Diocese for November 2025



LIGHT AND TRUTH

Much as I'd prefer not to think about Christmas presents and cards until the week before Christmas, the reality is that as soon as Bonfire Night and Remembrance Sunday are over, I must procrastinate no longer! Poor Advent. It's lost in the mists



DEAN JAN POSES FOR HER ADVENT CALENDAR!

of time, its season of spiritual preparation for Christmas overtaken by ever exotic Advent Calendars, their numbered windows promising expensive 'treats' to help us to get through

the stress of Christmas preparations. I've even seen a cheese-a-day Advent calendar. Seriously, who thought of that one?

Instead of moaning about the commercialism of Christmas, here at Lichfield Cathedral we do all we can to keep the Sundays of Advent special, beginning with the hauntingly beautiful Advent Carol Service. But then we go 'full bling' with the Christmas Light Show and the Christmas Tree Festival. They're ever popular, a seasonal 'must' in many people's diaries. And at the heart of both, is a search for the light in the midst of the darkness. Physical light in the long nights of winter. And spiritual light in a world which feels chaotic and dark.

One of my favourite worship songs is 'Christ be our Light' by the Roman Catholic songwriter Bernadette Farrell. It's beautiful. If you don't know it and have access to the internet, do search for it. You'll soon be singing along to its gentle tune and meaningful lyrics.

Longing for light, we wait in darkness.

Longing for truth, we turn to you.

This is why, I think, so many people turn to the Church at Christmas, on the shortest days of the year. Our ancestors prayed that the sun would return. We search for the Son – the one who is the Light of the World. Even those who don't yet know him for themselves. But light and truth are in short supply at the moment – and in the Church we know both.

Many the hearts that yearn to belong.

Let us be servants to one another,

making your kingdom come.

So many people are lonely at Christmas. So many are searching for somewhere to belong. As Christians we belong to one big

family, made brothers and sisters through our baptism. Who might we 'serve' this Christmas by simply inviting them to 'come and see'? Invite them to a carol service, or a social event at church, or bring them to their cathedral to see the Christmas Trees or Christmas Light Show. You might make someone's Christmas, and it might be for them the first step to joining the church and finding faith. The worst that can happen is that they say no, so what's to lose?

A blessed Advent from us all at Lichfield Cathedral.

YOUR CATHEDRAL.

The Rt Revd Jan McFarlane

Dean of Lichfield

The Advent season begins on the fourth Sunday before Christmas Day - in 2025, that is November 30.

Lichfield Cathedral's programme of worship and events for Advent and Christmas can be found on the cathedral website: www.lichfield-cathedral.org





Overwintering reptiles and amphibians

Churchyards, chapel yards and cemeteries are great places to find both amphibians and reptiles. These two groups include frogs, toads, newts,

lizards and snakes. The first three can come as a surprise as burial grounds rarely have ponds in them but actually, frogs, toads and newts all spend much of their time on land and really use ponds mainly for breeding and laying spawn. Amphibians (frogs, toads and newts) and reptiles (lizards and snakes) all hibernate, except for

some individuals in particularly mild winters, and whilst some amphibians may overwinter within ponds, most find a suitable spot on land.

Both amphibians and reptiles need to overwinter in places that are frost-free and unlikely to flood. They need to be protected from predators and from disturbance. This might be within the soil, perhaps using a crack

COMMON
FROG



caused by grave subsidence or beneath tree roots, under stones and grave kerbs, inside a chest tomb with a suitable hole or wide crack to clamber in, between the stones of a wall, under a pile of leaves or in a pile of deadwood. Woodland soil, with shade and leaves can be particularly good.

One of the differences between amphibians and reptiles is in their skin.

COMMON
TOAD





NEWT

Amphibians have smooth skin which can look velvety or have a bumpy, warty texture. Their skin is

permeable which means they can dry out. When on land, they need to keep moist, so will overwinter in a damp and shady spot, often under leaves or deadwood.

Reptiles have scales and impermeable skin so don't need a damp spot and may use compost heaps as well as cracks in walls and monuments.

Amphibian skin can also pick up chemicals easily, herbicides, pesticides and fertilizers can be fatal, again making burial grounds, with their lack of chemicals, particularly suitable. N.B. you may see coloured frogs that have picked up the colour of the soil where they overwinter, these can be quite brightly coloured red, orange or yellow.



COMMON LIZARD



GRASS SNAKE

Try to imagine that you are an amphibian or reptile and take a good look around your local churchyard or cemetery and you'll probably see that it's full of good spots to hibernate. You can increase these however. How about making a dead hedge or pile of deadwood in a shady spot? Do you have a compost heap? Try not to

empty it after the end of October in case its in use for overwintering. Tussocks of coarse grass and grassland plants like hogweed, particularly when next to a wall are favoured by slow worms, probably the most common reptile found in burial grounds. Shrubs and scrub often offer suitable nooks and crannies at their base.

By November its likely that amphibians and reptiles will be tucked safely away, although the timing does depend on the temperature in a particular year, but it's nice to know that they might be there awaiting the warmer weather of spring.



Harriet Carty,

*Diocesan Churchyard Environmental Advisor, harriet@cfga.org.uk,
www.caringforgodsacre.org.uk - individuals and groups in the
diocese receive 20% members discount on all CfGA materials. Use
the discount code diomem22*

COUNTRYSIDE MATTERS

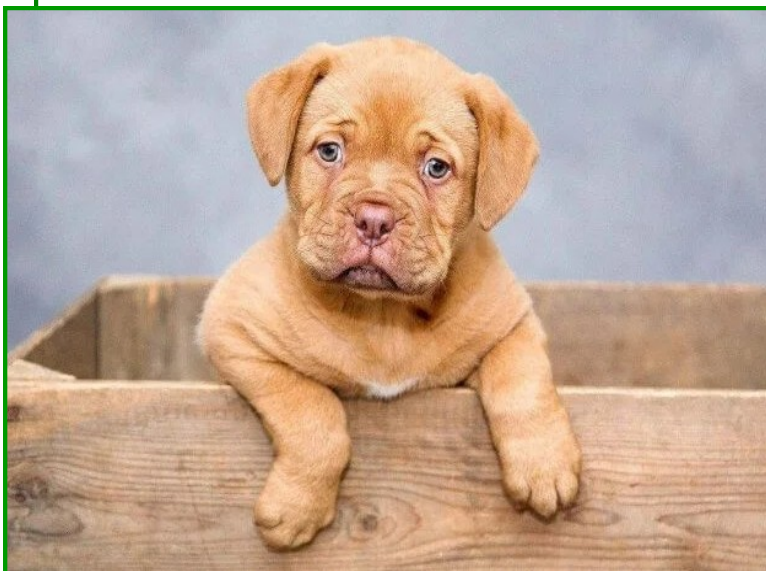
— November 2025

from ROGER ASHTON

Welfare and Healthcare

This heading is current at the present time with reference to human beings in urban and rural environments.

What about farm livestock and family pets? They are living beings, too. Welfare standards are set high in the UK, we have a global reputation and this reflects down the food chain to the consumer, which is very important, as any poor welfare issues are flagged up on the social media with instant widespread condemnation! Looking after farm livestock with skilled husbandry and with care and compassion, is an essential priority, you need both! Good welfare goes hand in hand with good health. Making time to observe their movements and general demeanour is time well spent and these days there is high tech help with the use of transponders tied to a neck or fetlock band or implanted micro chips. These can flag up issues



before human observation and of course early intervention and treatment helps prevent a worsening situation bringing a quicker recovery. There is a saying that

happy livestock are healthier whilst unhappy and stressed livestock are more vulnerable to picking up disease maybe because immunity levels are compromised.

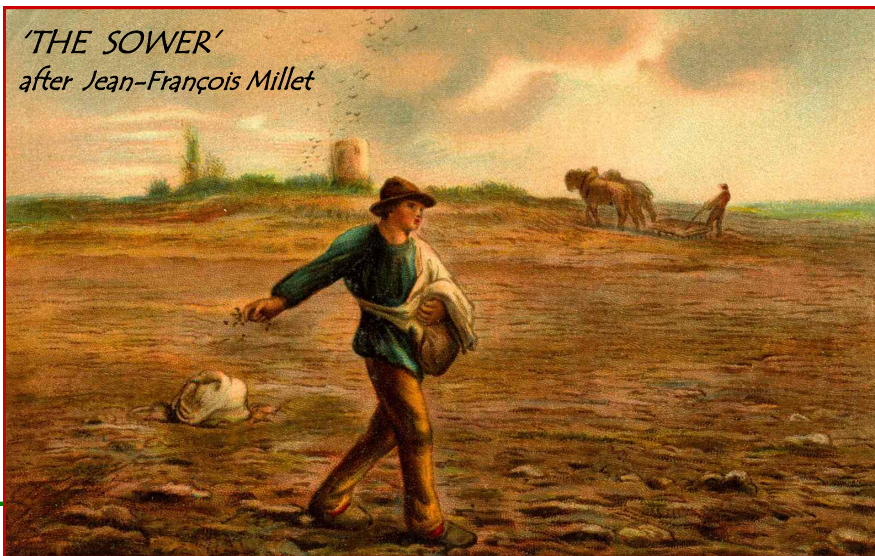


Intensive livestock farming with its close indoor proximity puts extra demand on welfare and health issues and management has to be top notch. Conversely extensive livestock farming, that is closer to a more natural and regenerative way, still requires skilled disease management. Nature and extreme weather throws unexpected health challenges at us and viruses now travel rapidly on a global scale with our modern transport systems.

God tells us that we "reap what we sow".

Think on!

'THE SOWER'
after Jean-François Millet



Abbé Michel Quoist would like to see with God's own eyes:

LORD, YOU HAVE SEIZED ME

The Christian who has 'capitulated' to the Lord, who has said 'Yes', often receives their reward immediately. The Lord gives them the *joy* of possessing Him and of being possessed by Him.

Words are inadequate to describe this loving embrace of God. The boy



Saul on the road to Damascus

who is 'seized' by his Master right in the middle of the traffic, and has to dismount from his bicycle—suddenly unable to go on safely—will understand. So will the young girl who has to leave the workroom abruptly to hide from her companions her transfigured face. The young one, standing in the school chapel far from home, suddenly knowing that here is 'home'.

Though we must not seek these perceptible graces, we must be simple enough to thank the Lord when He grants them to us, enjoying His tenderness before experiencing His uncompromising firmness.

from 1 John 4

And so we know and rely on the love God has for us. God is love.

Whoever lives in love lives in God, and God in them. This is love: not that we loved God, but that he loved us and sent his Son as an atoning sacrifice for our sins.


Philippians 3:7,8,12

But whatever were gains to me I now consider loss for the sake of Christ. What is more, I consider everything a loss because of the surpassing worth of knowing Christ Jesus my Lord, for whose sake I have lost all things. I consider them garbage, that I may gain Christ. Not that I have already obtained all this, or have already arrived at my goal, but I press on to take hold of that for which Christ Jesus took hold of me.

Lord, you seized me and I could not resist you.
I ran for a long time, but you followed me.
I took by-paths, but you knew them.
You overtook me.
I struggled, you won.
Here I am, Lord, out of breath, no fight left in me, and I've said
 'yes', almost unwillingly.
When I stood there trembling like one defeated before his captor,
Your look of love fell on me.

The die is cast, Lord, I can no longer forget you.
In a moment you seized me, in a moment you conquered me.
My doubts were swept away, my fears dispelled.
For I recognised you without seeing you.
I felt you without touching you,
I understood you without hearing you.

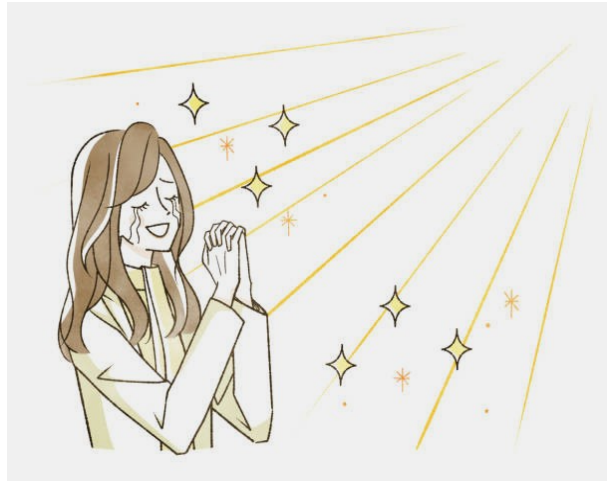
Marked by the fire of your love, I can no longer forget you.
Now I know that you are there, close to me, and I work in peace
 beneath your loving gaze.
I no longer know what it is to make an effort to pray.
I just lift my eyes to you and I meet yours.
And we understand one another. All is light. All is peace.

At times, O Lord, you steal over me irresistibly, as the ocean
 slowly covers the shore,
Or suddenly you seize me as the lover clasps his beloved in his arms.
And I am helpless, a prisoner, and I have to stand still.
Captivated, I hold my breath, the world fades away,
 you suspend time. I wish these minutes were hours . . .
When you withdraw, leaving me afire and overwhelmed with
 profound joy,
Though I have no new ideas, I know that you possess me completely.
You have reached new depths in me,
The wound has widened and I am more than ever a prisoner
of your love.
Lord, once more you have made a desert around me, but this 
 time it is different.

You are too great, you eclipse everything.
What I had cherished now seems trifling, and my desires melt
like wax in the sun under the fire of your love.
Nothing matters to me,
Neither my comfort
Nor even my life.
I desire only you,
I want nothing but you.

I know that others say, "He is mad!"
But, Lord, it is they who are out of their minds.
They do not know you, they do not know God, they do not know
that one cannot resist him.
But you have seized me, Lord, and I am sure of you.
You are there, and I am overjoyed.
Sunlight floods over all, and my life shines like a jewel.
How easy everything is, how luminous!
All is pure and joyful.

Thank you, Lord, thank you!
Why me, why did you choose me?
Joy, joy, tears of joy.



from **'Prayers of Life'** by Michel Quoist
ISBN 0-7171-0158-4



*The Parish Church of St Peter and St Paul,
Wem*



St Peter & St Paul's Parish Church

SUNDAY SERVICES IN NOVEMBER

SUNDAY 2nd NOVEMBER—ALL SAINTS SUNDAY

08:00 & 09:45—Holy Eucharist
16:00—ALL SOULS SERVICE

SUNDAY 9th NOVEMBER—REMEMBRANCE SUNDAY

08:00 & 09:15—Holy Eucharist
10:55—Remembrance Service at the War Memorial
followed by the Civil Service in Church

TUESDAY 11th NOVEMBER

11:00—Armistice Day Service at the War Memorial

SUNDAY 16th NOVEMBER—2nd SUNDAY before ADVENT

08:00 & 09:45—Holy Eucharist

SUNDAY 23rd NOVEMBER—CHRIST THE KING

08:00 & 09:45—Holy Eucharist
17:00—Prayer & Praise

SUNDAY 30th NOVEMBER—ADVENT SUNDAY

BENEFICE SERVICE AT ST PETER'S, LEE BROCKHURST

11:15—Holy Eucharist at Lee Brockhurst

**You are welcome to join us
at any of our services!**



“Growing in Faith, Hope and Love”

WHAT'S ON IN THE PARISH

Prayer
+
Praise



Sunday 23rd November
at 5 pm in the Church
*Please come along for a quiet
time together*

CHURCH COFFEE MORNINGS

13th December The Christmas Fayre

We have a stall for Homemade cakes, Olive brings Gluten Free cakes and biscuits, David and Margaret's scones (especially cheese ones) are always winners, Tricia bakes the ever-popular fruit cake, Sarah's Chocolate Brownies were a hit too. We often have chocolate cake & lemon drizzle cake and I expect this month there will be apple cake.

July & August have seen plentiful harvest of soft fruits, strawberries, raspberries, blackcurrants, redcurrants, blackberries and plums and now there are courgettes, tomatoes and wind fall cooking apples.

I have been busy making :-

- Strawberry Jam, Raspberry Jam
- Blackcurrant Jam, Blackberry Jam
- Tutti Fruiti Jam (Strawberry, Raspberry, Blackcurrant & Redcurrant)
- Spiced Port & Plum Jam
- Blackcurrant and Rhubarb Jam
- Plum and Redcurrant Jam
- Blackcurrant & Orange Jelly

- Autumn Marmalade (Lemon, Lime & Apple)
- Lemon, Courgette and Thyme Marmalade
- Redcurrant and Apricot Chutney
- Plum and Apple Chutney
- Red Tomato and Celery Chutney
- Tangy Courgette Relish
- Yellow Courgette and Tomato Relish

So whether you are looking for a traditional jam or something a little different do visit my Preserves Stall.

There are tombola and raffle stalls. Alan & Wendy are going to look after the bric a brac stall and would appreciate donations of pre-loved goods. We have recently started a book stall stocked with donated books and are asking folks to put a donation in the box if they are taking a book away. And finally, there is the jigsaw exchange where you can take away a jigsaw for £2 or if you bring a jigsaw in exchange, you will be charged £1. If you would like to help with the raffle or serving coffee, please speak to Elaine Shaw who is coordinating volunteers for our coffee mornings. Donations of books, homemade cakes and raffle prizes are always welcome.

Although these coffee mornings do raise funds for church, the main reason that Bette and June started coffee mornings was to give people the chance to meet up and chat so do use this opportunity to meet with friends and come and support our coffee mornings this autumn.

Sybil



Shrewsbury and Telford Hospitals Happenings

Since last year when I started joining online meetings organised by the Julia Clarke, Director of Public Participation for Shrewsbury and Telford Hospitals I learned a lot more about what is happening in the NHS locally. We are all invited to Get Involved via Patient Experience and/or Public Participation.

<https://www.sath.nhs.uk/about-us/get-involved/>

These meetings have included:

The **Hospital Transformation Programme Team** quarterly focus group that deals with issues related the new 4 storey building at RSH and the re-organisation of services.

Communication & Engagement for Emergency and Urgent Care FG looked at providing information about the changes in Accident and Emergency Services. The aim is to highlight the difference between Emergency Care (EC) that is needed for life threatening conditions (e.g. stroke, cardiac arrest) and Urgent Care (UC) that is needed for non-life-threatening conditions (e.g. suspected broken bones, cuts needing stitches.) In the new

The poster is titled 'If you need medical attention, knowing the difference between urgent and emergency care could save you time and money...'. It features the NHS logo and 'The Shrewsbury and Telford Hospital' text. Below the title, there are two columns: 'Emergency Department' and 'Urgent Care'. The Emergency Department column lists: Signs of a heart attack, Signs of a stroke, Severe difficulty breathing, Seizures, Heavy bleeding (spraying or pouring), Rapid swelling of lips, tongue or mouth, and Severe injuries after a serious accident. The Urgent Care column lists: Sprains and strains, Suspected broken bones, Minor head injuries, Cuts that need stitches, Minor burns and scalds, Feverish illnesses, and Abdominal (tummy) pain. At the bottom, a red banner says 'Always call 999 for life or limb threatening emergencies'.

Emergency Department	Urgent Care
• Signs of a heart attack	• Sprains and strains
• Signs of a stroke	• Suspected broken bones
• Severe difficulty breathing	• Minor head injuries
• Seizures	• Cuts that need stitches
• Heavy bleeding (spraying or pouring)	• Minor burns and scalds
• Rapid swelling of lips, tongue or mouth	• Feverish illnesses
• Severe injuries after a serious accident	• Abdominal (tummy) pain

Always call 999 for life or limb threatening emergencies

building at RSH there will be separate entrances for EC and UC. We can also use the Minor Injuries Unit at Whitchurch Community Hospital.

Signage and Wayfinding FG looked at the current signage around the hospital and then presented different ways of using colour to assist people to find their way. The emphasis being on choosing muted colours to provide a calm atmosphere. A survey was held to choose the final colour scheme for the new building; with each floor in the new buildings to be a named after a Shropshire hill.

The **monthly update** meeting which gives a brief on developments in the Trust and then opens to a wider discussion with participants asking questions and making suggestions.

As the new building as RSH started, the main entrance was transferred to the Treatment Centre and parking areas reassigned. Volunteers have been helping direct people through the hospital to Out- Patients. Recently a Buggy was purchased by the SaTH Charity and League of Friends of Shrewsbury and Telford Hospitals so that patients can be driven through the hospital, from the entrance at the treatment centre to outpatient departments.

I also learned of the **Park and Ride** scheme which runs from the OXON Park and Ride site to the Treatment Centre. Mike and I found this quite convenient recently; there is a bus every 20 minutes and the journey takes 10-15 minutes. It was easy to park and £1 each for return fare cheaper than parking on the hospital site. It has been suggested that running a service from the Harlescott Park and Ride would be more convenient for people in North Shropshire. I understand SaTH is exploring the possibility of a Park and Ride service to PRH.

Recently a Discharge Support Scheme has been set up where volunteer drivers are available to take discharged patients home quickly. Details about this and other **volunteering** opportunities can be found at:

<https://www.sath.nhs.uk/working-with-us/volunteering/>

The **About Health** presentations.

These About Health presentations are given by a leading consultant and include such topics as Dementia, Diabetes and Menopause. You may find it interesting to view these presentations online

<https://www.sath.nhs.uk/about-us/get-involved/public-participation-2/get-involved-with-us-2/http-focus-groups/recordings/>

If you are interested in finding out more for yourself if you click on this link:

<https://www.sath.nhs.uk/about-us/get-involved/>

and join as a community member, you will receive a monthly update by email.

Thank you for reading

Sybil





THE JIGSAW EXCHANGE

Don't forget the Jigsaw exchange at our coffee mornings. Jigsaws galore with the plan that you can take away a jigsaw for £2 or if you bring a jigsaw to exchange then you will be asked to donate £1.

I hope this will enable us to share our jigsaws and raise a little extra for church funds. Thank you in anticipation of your support.

Sybil



The Church is looking for people to join our choir.
We practice on a Thursday evening in the Church
from 7:30 – 8:30pm.

Why not come along and give it a try. You're guaranteed
a very warm welcome and no obligation!

For further information please contact Elaine on 07969 511590

Musical Events in Wem Parish Church



In November the Community Choir will be giving a concert.

(Friday 22nd

November at 19:00.)

This has had to be cancelled, but it will hopefully take place in the Spring.

Watch this space.

In December Brass Buttons, a brass quartet, have kindly accepted our invitation to join Kim Archer, Elaine Shaw and Glyn Williams in a Christmas themed concert with audience participation. This will be on **Saturday 6th December at 14:30**, so please keep this date free so that you can join us for this celebratory event.



RIDE+STRIDE

More about Ride and Stride, this time from Wem from Helen.

Rob Ballantyne visited St Peter's & St Paul's Wem,
St Mary's Shawbury and St Mary's Whixall by car.

Between 9th & 17th September Helen Hornsby visited
All Saints Baschurch, St Peter's Myddle, St Mary's Broughton,
Holy Trinity, Weston Lullingfield, St Simon & St Jude
Cockshutt, St Michael & All Angels Loppington, Whitchurch
Road Cemetery Chapel Wem, St Peter's & St Paul's Wem and
Holy Trinity Meole Brace in Shrewsbury, by car.

Together Rob & Helen raised £245 (plus gift aid by 9 sponsors)
for Shropshire Historic Churches Trust,
half of which will be given to St Peter's & St Paul's Wem.

The reason Helen didn't participate on 13th September (other
than WRC Chapel) was because she was assisting Christine
Huxley with her latest charity craft sale in Fismes Way.

Despite the very heavy rain, hail & strong winds, Christine
raised £500 for Wem Playmates Nursery on Wem
Business Park. Christine has held numerous charity craft sales
over many years. She has said this was to be her last,

but watch this space!

Chris is busy sewing, knitting, crocheting, making table lamps
from bottles, etc every day, her skills are endless. She is a
credit to us all.

I would add Chris has been attending St Peter's & St
Paul's Church Wem for over 80 years.

The Parish Church of St Peter, Lee Brockhurst

St Peter's Church



Come and join us here on Wednesdays
19th November &
10th December (note earlier date)
for "Coffee and Chat"

Any time between 10.30 and 12.00

No charge but donations to the church welcomed

For further information ring 07858123669





St. Peter's Church
Lee Brockhurst

***Autumn Festive
Fayre***

Saturday 22nd November
At Lee Brockhurst
Village Hall

10.30 until 12.00

*Coffee, mince pies
Crafts cakes,
Bric-a-brac
Raffle & More*

Everyone welcome

The North Salop Wheelers

*Phoebe reminisces about another
important part of her life*

North Salop Wheelers – not a cycling club!

North Salop Wheelers (NSW) was born in the aftermath of the 2001 Foot and Mouth Disease epidemic that affected the whole of mainland British Isles.

The then government realising that the farming community and residents in the countryside had suffered a serious blow to their livelihoods decided to offer grants to assist them to get back onto their feet. These were offered to the Parish Councils to administer with various different categories including a Transport Grant of up to £10,000.



Before the council could apply for any of the grants they had to undertake a survey of the inhabitants of the parish to ascertain what they felt they were most in need of. Whixall Parish Council, of which I was the chairman, undertook the survey and Transport came out on top.

We therefore decided to apply for a Transport Grant. Councils were encouraged to group together in order to be able to obtain 2,3 or even 4 times the £10,000 grant and thus be in a position to purchase a new mini-bus rather than a second hand one. Whixall was singularly defeated in this aim and decided to “go it alone”. We intended once we had obtained a mini-bus to offer it to another group of parishes who had started up a service between Ellesmere and Oswestry.

Our bid for the grant was successful and we duly obtained a second-hand 13 seat mini-bus from Bishops Castle. I was delegated to drive this bus home in the autumn of 2004. Prior to this we had been borrowing a bus from Bomere Heath on days when they did not need it. So I did have some experience of driving a mini-bus. To our dismay the other transport organisation did not want our bus because it was second-hand. What to do now? Well, we’ll set up our own transport organisation and help the folk of Whixall get their shopping, visit the doctors or even the hospital!

We started with a regular service into Whitchurch on a Friday which is market day. In those days there was the “gang of four” our Chairman, our Treasurer, our Transport Officer and myself as the Secretary. Apart from the Treasurer we all took turns to do the driving and it was great fun. We only had a small number of passengers who quickly became friends and we started taking them on a longer trip to some other town, mainly in Shropshire but occasionally

NS WHEELERS CBP



Contact & Booking Line:
07597273959

Text & Ride: 07597273959

Email: WheelersCBP@gmail.com

Door to door transport to get you out and about in
North Shropshire

in Staffordshire or Wales. The passengers liked nothing better than to visit a supermarket with a café, have lunch in the café and then do a shop before returning home. In this way we visited Tuffins at Craven Arms, Stan's Store at St Martin's and Nantwich, Oswestry and Llangollen's town centres.



We started to grow and gradually we got more passengers, more drivers and other vehicles such as people movers and cars. We also took over other routes travelling to Hanmer in Wales and



visiting Wem on a Thursday, Ellesmere on a Tuesday and eventually Market Drayton on a Wednesday. The latter became our busiest day and we would send out buses to pick up passengers for Market Drayton from Whitchurch, Calverhall, Ightfield, Fauls Green, Woore, Norton-in-

Hales, Hinstock and Cheswardine. At times we would have 5 or 6 vehicles of different sizes in the bus station at Market Drayton.

Some of our journeys fell by the wayside because the number of passengers fell to unsustainable numbers but we tried to carry on for as long as possible.

We started by keeping one mini-bus on our front drive and finished up renting accommodation on Wem Industrial Estate.

The mini-buses run on what is called a Section 18 Bus Permit and this means that we cannot pick up passengers on the side of the road unless they are members of our organisation. The passengers have to book at least 24 hours beforehand. NSW members pay an annual subscription but if they have a bus pass then all the market trips are free of charge. If they book for a hospital or doctor's surgery visit then they pay a mileage rate similar to the Community Car Service.

NSW or "Wheelers" as it is fondly known also hires out buses and drivers to community organisations such as The Rotary Club, various church Groups and clubs. All the drivers are volunteers and give their time for free, they have training and familiarisation time before they start to drive the buses on their own or with a passenger assistant.

The original team continued to run Wheelers until Covid struck and a new team took over once we were free to mix with each other again. The new team have carried on the work started back in 2004 and this October marked the twenty-first anniversary of its inception.

I am very proud to have been involved with helping the people of North Shropshire access shops and medical services when public transport is so scanty and a high proportion of households do not possess their own transport. I am now a passenger of NSW although I do not use their services very frequently, it is, however, a joy to book a journey to Market Drayton mainly to see the passengers who have been travelling with me in the past.

Phoebe

NSWHEELERS
COMMUNITY BUS

The Parish Church of St Luke,

Weston-under-Redcastle



**WESTON UNDER REDCASTLE
VILLAGE SHOW**

**AUGUST 3rd 2025
FINAL FIGURES REPORT
£13,025.79p RAISED**

**DISTRIBUTED TO
SEVERN HOSPICE, HOPE HOUSE ,
SHROPSHIRE CADET FORCE TRUST,
ST LUKE'S CHURCH, WESTON
AND
WESTON-U-REDCASTLE VILLAGE HALL**

WE HOPE TO DO IT ALL AGAIN NEXT YEAR!!



Come On In



**WHAT
A
SHOW—
AGAIN!**



THE HARVEST SUPPER

The Harvest Festival Supper was held in the partially renovated Village Hall on Monday 27th October. The Hall was looking good and promises great things. The tables were wonderfully decorated with harvest fare—an amazing array of different pumpkins, all different shapes, sizes and colours, apples, flowers and vines.



But we were there to share a meal—great quantities of cottage pie and garden peas appeared from the kitchen, not quite by magic but by lots of hard work. Many bottles of various beverages filled the tables and all was accompanied by lots of good chatter. We weren't short of puds either—all sorts of crumbles and cream and a delicious chocolate cheese cake. Mmm Mmm! ... a very tasty and happy meal.

Thank you to the preparers!



Please continue to hold our new Archbishop
Sarah Mullally in your prayers!



A PRAYER FOR THE ARCHBISHOP OF CANTERBURY

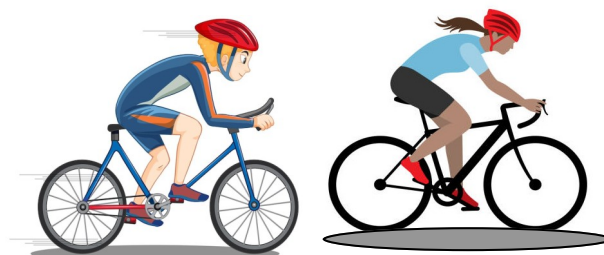
Almighty and everlasting God,
the only worker of great marvels,
send down upon your servant Sarah,
called to be Archbishop of Canterbury,
and all who are committed to her care,
the spirit of your saving grace,
and that they may truly please you,
pour upon them the continual dew of your blessing.
Grant this, O Lord,
for the honour of our advocate and mediator,
Jesus Christ.
Amen.



Ride and Stride 2025

Ride and Stride this year took place on Saturday 13th September. Thank you to those who rode, strode or drove, and a special thanks to those who sponsored them. The sum of £1125.00 was raised (Gift Aid will add to that). The Shropshire Historic Churches Trust will benefit and so will our three churches, as 50% of the amount raised by each church comes back to them.

Thank you again.



Thank you very much
to all our contributors.

THE DECEMBER ISSUE

needs your input preferably by **15th November,**
but definitely no later than 22nd, please.

All articles e-mailed to Phoebe Ashton

phoebe42.lee@gmail.com

In Word, please, and any Pictures as jpeg's

THE LAST PAGE

The Collect for Advent

Almighty God, give us grace to cast away the works of darkness and to put on the armour of light, now in the time of this mortal life, in which your Son Jesus Christ came to us in great humility; that on the last day, when he shall come again in his glorious majesty to judge the living and the dead, we may rise to the life immortal; through him who is alive and reigns with you, in the unity of the Holy Spirit, one God, now and for ever.

Advent marks the beginning of the church year. It is a time for reflection in darkness, for renewal of hope and for a movement towards a beginning.

The season of Advent, as it first emerged in the Church in the fourth and fifth centuries, lasted, like Lent, for 40 days. Later tradition developed the Advent we know today, of four Sundays before Christmas Day.

It is a season of expectation and preparation as the Church prepares to celebrate the coming of Christ. Church decorations are simple and sparse, and purple is the traditional colour used. Advent falls at the darkest time of the year, and the natural symbols of darkness and light are powerfully at work throughout Advent and Christmas.

